

MONTHLY MEMBERSHIP PROGRESS REPORT

District 11 D2

Results as of: 4/30/2026

GMT:

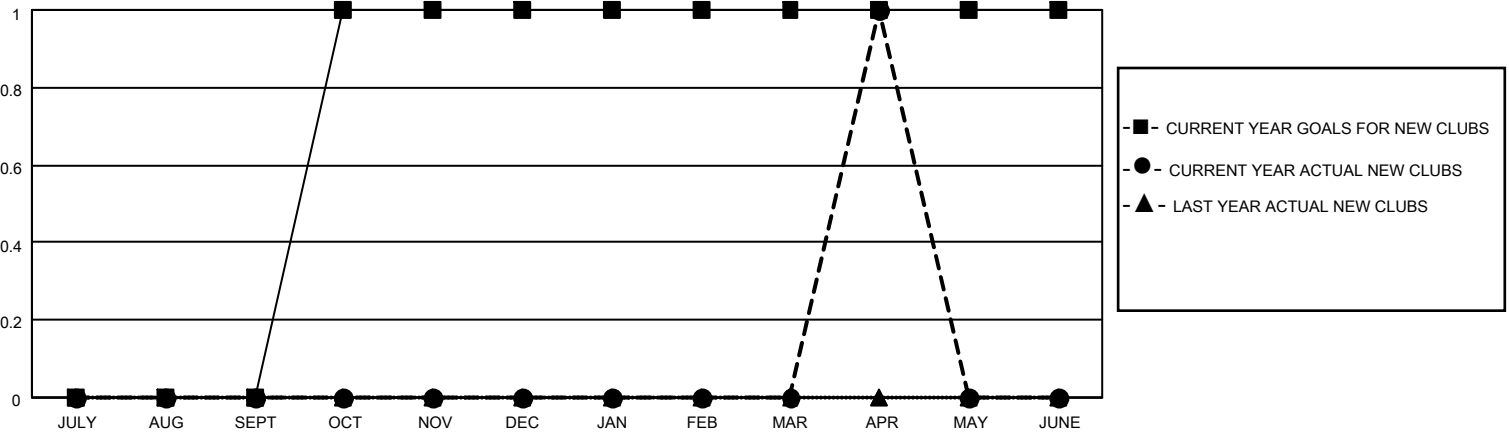
LOCATION MICHIGAN

GMT CA

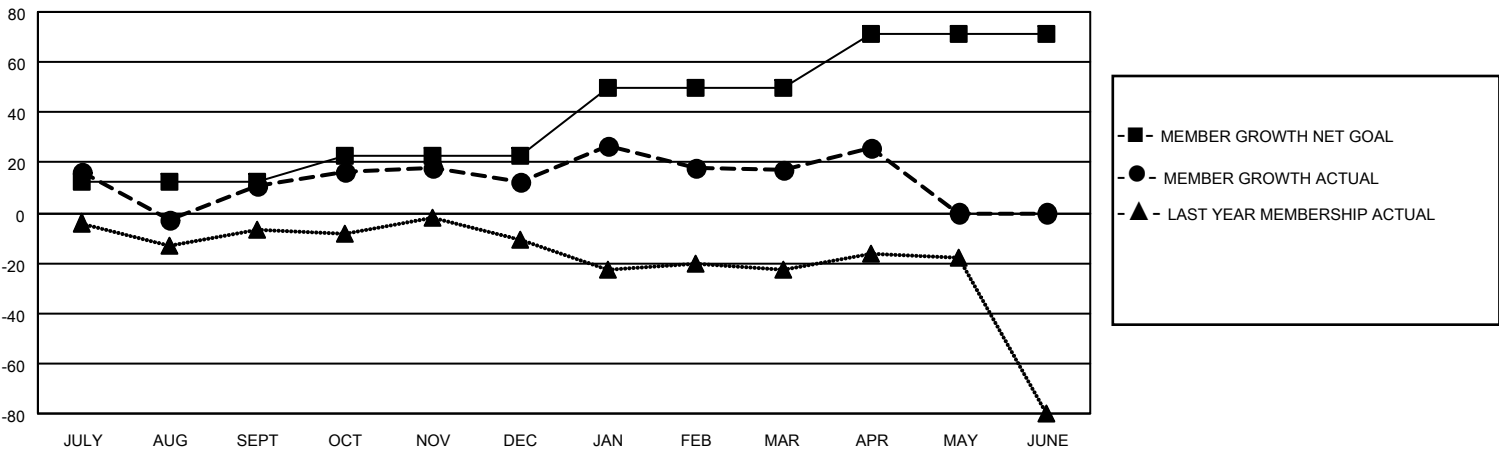
Clubs			
RESULTS FOR 2025-2026			
QUARTER	NEW CLUB GOAL	NEW CLUBS	DROPPED CLUBS
JULY/AUG/SEPT	0	0	1
OCT/NOV/DEC	1	0	1
JAN/FEB/MAR	0	0	0
APR/MAY/JUNE	0	1	0

Members			
RESULTS FOR 2025-2026			
QUARTER	MEMBER GROWTH NET GOAL	MEMBER GROWTH ACTUAL	DROPPED MEMBERS ACTUAL (including transfers)
JULY/AUG/SEPT	12	48	34
OCT/NOV/DEC	11	31	26
JAN/FEB/MAR	27	47	40
APR/MAY/JUNE	21	46	33

GOALS AND ACTUAL NEW CLUBS CUMULATIVE



GOALS AND ACTUAL MEMBERS CUMULATIVE



DROPPED CLUBS: 2	26 CLUBS OF 46 ADDED 1 OR MORE NEW MEMBERS	GENDER DISTRIBUTION	
		MALE 826 (70.06%)	FEMALE 352 (29.86%)
DROPPED MEMBERS		CLICK HERE FOR CUMULATIVE MEMBERSHIP DATA	TOTAL FAMILY UNIT MEMBERS 177
DECEASED 6	CLUB CANCELLED 1		FAMILY MEMBERS PAYING HALF DUES 90
OTHER 126	TOTAL 133		